



WHANGAPARĀOA COLLEGE

Together □ Believe □ Achieve □ Ngātahi whakapono tutuki

Newsletter
Term 1 Issue 3 2022

In This Issue

- From the Principal's Desk
- Yr 8-13 Meet the Teachers Postponed
- Alumni Foundation
- NCEA Info Evening
- Enviro Group
- 7WINK Poetry
- Spirit of NZ
- Auckland Writers Festival
- From The Nurse
- Kindo Online
- Sports News
- Upcoming Events
- Dates to Remember
- Community Notices

Quick Links

[Link to Parent Portal](#)

[Link to College Calendar](#)

[Link to NZQA Website](#)

[Link to Careers Page](#)

From the Principal's Desk

Kia ora ē te whānau o Whangaparāoa,

We are certainly in the middle of the Omicron outbreak, aren't we? As a school, we appreciate the toll this is taking on our community, and more specifically our learners, staff and whānau. Our goal is still the same - do as much as we can to keep the school open, operational, and ensure face to face teaching and learning can occur. Thank you, everyone, for your patience, particularly last week, as we had to juggle a few lessons to accommodate this.

Sport and extra-curricular activities are being offered where possible, albeit slightly differently to what we're used to in some cases due to Covid restrictions. Once we receive official correspondence regarding the vaccine mandate for school sport, we will communicate this with you. Please remember to keep an eye on our Facebook pages, as well the daily notices which you can access on our website via the News & Events tab, for information on what's being offered.

You may have seen [this](#) article in the NZ Herald over the weekend about learners being involved in a dangerous blackout game and filming it for TikTok. We are aware of learners from our school also participating in this activity. Please have a conversation with your children about the severity of this ridiculous activity.

Part of our [strategic intent](#) for the next 5 years is to have a greater focus on Hauora. Specifically, we wish to address attendance and truancy, and have a greater focus on higher expectations. This was developed through the consultation feedback we had from you, our community. We do have expectations that our learners attend school as much as possible and on the next page are two simple tables that will help you relay to your learners about the importance of being at school, on time, and ready to learn. Thank you for your support with this.

Working together for our children's education and connecting home and school, makes us a great community of learners.

Ngā mihi nui

Steve McCracken

WHAT IS YOUR CHILD MISSING OUT ON?

JUST A LITTLE BIT LATE FOR SCHOOL DOESN'T SEEM MUCH BUT

If your child is missing	That equals	Which is	And over 13 years....
10 minutes per day	50 minutes per week	Almost 1.5 weeks of the school year	Almost half a school year
20 minutes per day	1 hour 40 minutes per week	Over 2.5 weeks per year	Almost 1 school year
Half an hour per day	Half a day per school week	4 weeks per school year	Almost 1.5 school years
1 hour per day	1 day per school week	8 weeks per school year	Over 2.5 school years

DOES ATTENDANCE REALLY MATTER?

1 OR 2 DAYS A WEEK DOESN'T SEEM MUCH BUT...

If your child is missing	That equals	Which is	And over 13 years....
Half a day per week	20 days per year	1 month per school year	Almost 1.5 school years
1 day per week	40 days per year	2 months per school year	Almost 2.5 school years
2 days per week	80 days per year	4 months per school year	Almost 5 school years
3 days per week	120 days per school year	Over half a school year	Almost 8 school years

Term 1 Progress Reports

Year 7—13 Progress Reports will be available on Friday to be viewed by parents/caregivers. Instructions will be emailed with a link and instructions on how to access the reports.

NZPMC Physics and Mathematics Competition

The NZPMC is a nationwide standardised Physics and Mathematics Competition for High School students of all levels throughout New Zealand. It is a competition created to test candidates' ability to use their Physics and Mathematics knowledge to tackle a wide range of problems based on Physics and Mathematical theory that matches competitions overseas, nationally.

Registration Fees \$12

For more information use this link <https://www.nzpmc.com/resources/what-do-we-test>

If you are interested please see Mrs Menezes in S11

Year 8-13 Meet the Subject Teachers Meeting—POSTPONED

This was scheduled for Wednesday 23 March, however due to the current restrictions, this evening has been postponed until Wednesday 11 May (Week 2, Term 2). More information will be given closer to the time.

7TURK—Whales Tales 2022

Our learners in 7TURK have been working on designing and producing their own images with each one representing our local marine area to raise awareness about the plight of endangered whales. Each learner will have their image decouped onto the class mini whale's tail which will be on display at the Plaza when completed. Check out the 80 artists and their tails around Auckland as part of the Whales Tales 2022 trail and soon to be added 80 pepi pods from schools across Auckland.

To find out more information and see some more beautiful creations go to <https://whaletales2022.org/schools/>



Whangaparāoa College Alumni Foundation

We are currently in the beginning stages of setting up a Whangaparāoa College Alumni-Foundation for past and present learners, parents, whānau whānui and local community members. A **Facebook Live** event is being held from the Whangaparāoa College Facebook page on **Tuesday 29 March, 7 pm** to present our one-page strategic plan - **"Us-on-a-Page"**. This event will be hosted by Miss Lisa White (current staff member), Mrs Joanne White (past staff member), and Mr Luke Le Cheminant (past learner). We hope to see many of you online. Please spread the word!

The first event we are organising will be an Alumni-Community Ball on Saturday 2 July in the school gym. Please mark this date on your calendar. More information soon (Those that attended the last community ball will tell you how great it was! Dress up! Food, drinks, entertainment and more



WGP COLLEGE ALUMNI-FOUNDATION FIND OUT MORE

Facebook Live Event
on Whangaparāoa College Facebook Page
Tuesday 29 March, 7 pm

Hosted by:



LISA WHITE

Current Staff Member

JOANNE WHITE

Past Staff Member



LUKE LE CHEMINANT

Past Learner

We are in the beginning stages of setting up a Whangaparāoa College Alumni-Foundation for past & present learners, parents, whānau whānui and local community members.

Join us online as we present our one-page strategic plan;
"Us-on-a-Page"

NCEA Information Evening Via Facebook Live

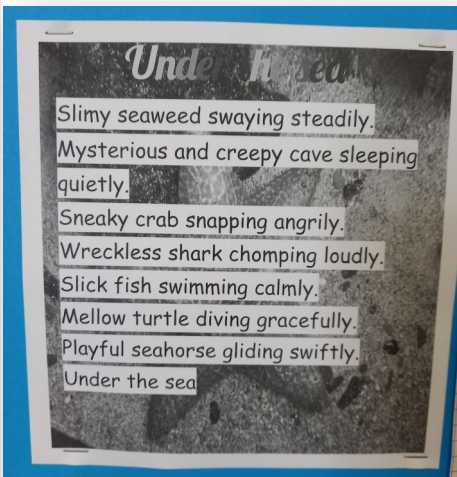
Tuesday 22 March, 7 pm streaming live from the Whangaparāoa College Facebook page - Mr Steve McCracken, Miss Lisa White, Mr Graeme Williams. This evening is mainly for parents of learners in Year 11-13 to hear our expectations of learners for NCEA and to ask questions. Note that learners in Year 11 aim to get 20 credits in Literacy and Numeracy towards gaining their best NCEA Level 2 results over 2 years (Year 11 and Year 12). Learners in Year 13 aim to gain NCEA Level 3, and many also aim to achieve University Entrance.

Enviro Group

Last week, the amazing EnviroGroup crew met after school for a massive rubbish blitz in the bush area above the school field. We pulled out around 10 bags of rubbish, and removed the pods of the dreaded moth plant that grows all over our native plants and trees, completely smothering them. Well done guys, you made a huge difference!

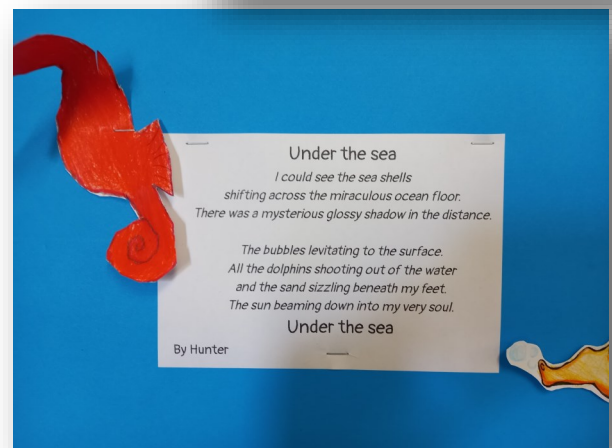
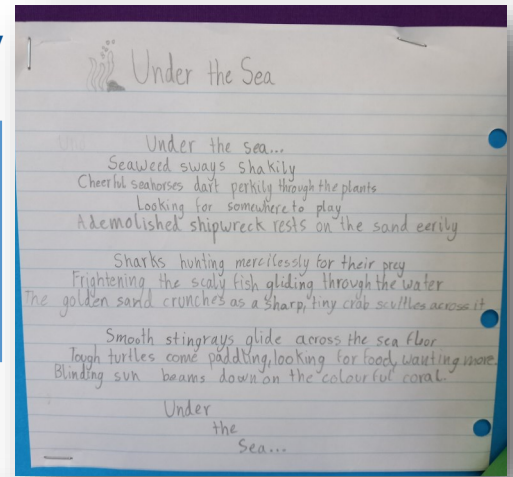
If this sounds like the sort of thing you would like to be involved in, we meet every Friday (or so) lunchtime in S2, LOTS going on this year, and anyone from Year 7 up to Year 13 (and staff) are more than welcome to join us any time.

Photo—Leon and Idony jumping for joy at how much rubbish we collected. With Amelia and Kealan in support.



7WINK Under the Sea Poetry

7WINK have created some amazing Under the Sea Poetry using language to impact the reader. They also created some stunning sea art work for our wall display.



Spirit of New Zealand

On Friday 25 February, head boy Joshua Ahn and prefect Isi Booth presented their 10 day Spirit of New Zealand journey to the Gulf Harbour Yacht Club who helped fund their trip. Both learners shared their experiences which captivated the audience. This once-in-a-lifetime opportunity offered them memorable experiences including interpersonal skills, self-confidence, sailing experience, heaps of fun and contributed to their Duke of Ed journey!



Auckland Writers' Festival

The Auckland Writers' Festival is being held at the Aotea Centre in August. This festival is considered to be one of the best of its kind in the world and offers learners the opportunity to see and hear from the very best local and international writers of contemporary fiction and non-fiction. Learners will be enriched by innovative thinking, challenged by new ideas and inspired to discover more.

The dates for the festival are as follows:

- Wednesday 24 August for Years 7 & 8
- Thursday 25 August for Years 9 to 13

Please collect a letter from S11 if you would like to attend. Cost of this trip is \$18.

16 Year Old Boy Battling with Cancer Needs Your Help

The son of two of our teachers (Carla Taylor and Lisa Williams) has cancer and is needing support. John Taylor attends Mahurangi College. If you are able to spare a few dollars to assist with treatment and medication, etc, please go to this link:

<https://givealittle.co.nz/cause/john-taylor-16yo-has-cancer-and-needs-your-help>



Art Department Donations

The art department would like donations of magazines—in particular, sports magazines, car magazines, skate and surf magazines. Please contact Kathie Boyd in the art department on katherinebo@wgpcollege.school.nz or drop off at the school office. Thank you.



From the Nurse

MASK WEARING

Mask wearing is mandatory at WGP College (unless you have a mask exemption). Please ensure your child has a mask and a spare in their bag. However, **if they do not have a mask or spare, these can be purchased at the Kura Kai Café for \$1 each during morning tea or lunch time.** If your child has a mask exemption please email a copy through to nurse@wgpcollege.school.nz.



Please ensure your child brings a full water bottle to school each day.

VACCINATIONS

Year 7 Immunisations

All Year 7 learners have been sent home with a consent form for Boostrix (Tetanus, Diphtheria and Whooping Cough). ALL learners need to return a completed form to their Kaiārahi with either consent or non consent to receive this immunisation at school. Parents and caregivers have been sent an email with more information.

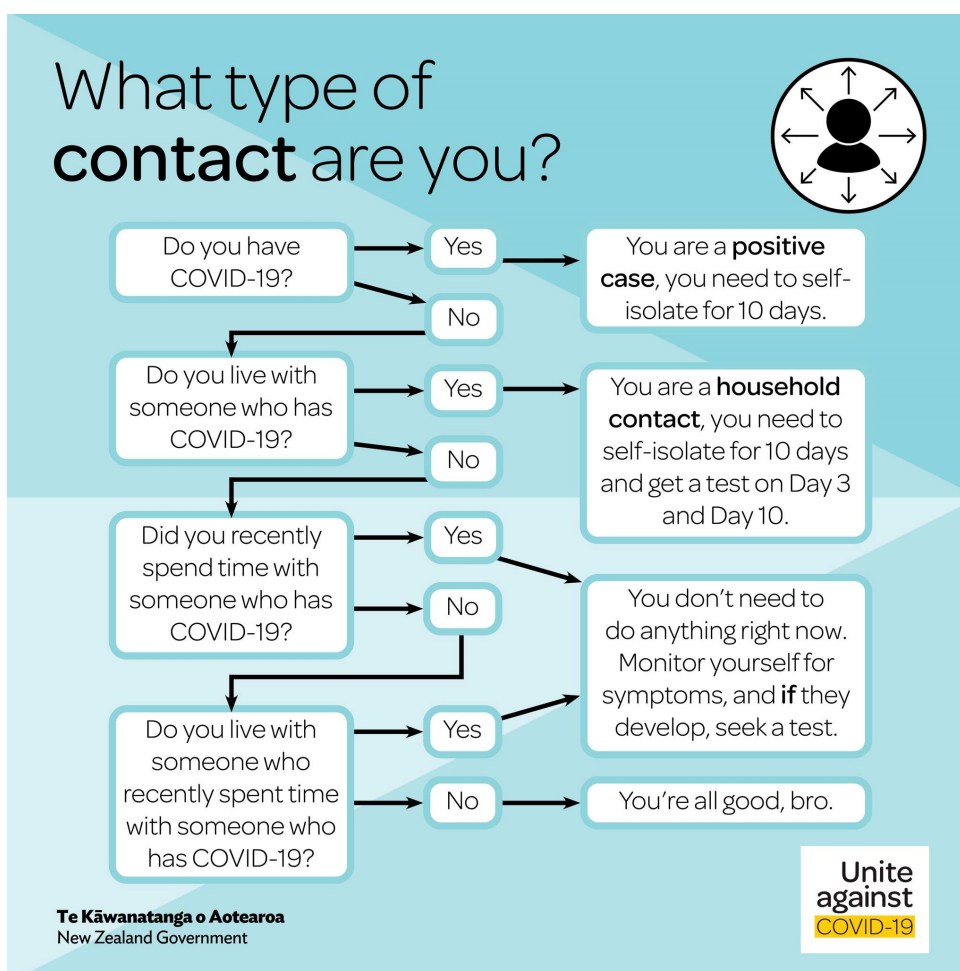
The date the public health nurses will be at school vaccinating for Boostrix is 18 August 2022.

Year 8 Immunisations

All Year 8 learners have been sent home with a consent form for HPV Immunisation. ALL learners need to return a completed form to their Kaiārahi with consent or non consent to receive this immunisation at school. Parents and caregivers have been sent an email with more information.

The date the public health nurses will be at school vaccinating for HPV is 12 May for HPV 1 and 17 November for HPV 2.

Covid-19—what type of contact are you?



OUR KINDO ONLINE SCHOOL SHOP IS NOW LIVE!!

We are excited to let you know that our Kindo School shop is now live and open 24/7.

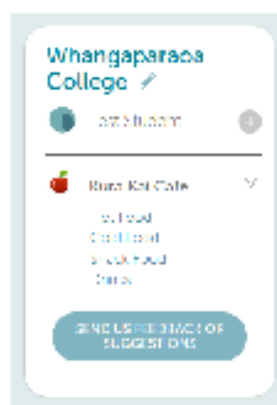
In 2022 all your school payments will be able to be made in one place with your myKindo account.

You can now order school lunches easily and soon will be able to see your outstanding payments on your personalised account.

Your myKindo account

Kindo is used in a lot of schools and organisations in your area. So please select the option below that applies to you.

- **Current user** - If you already have a current ezlunch or myKindo account: You can simply [log in here](#) and update your details on the 'my details' page.
- **Previous user** - If you have had an ezlunch or myKindo account in the past, but have closed the account, or not used the account in the last 15 months: Please [email our Kindo helpdesk](#).
- **New user** - If you have never had an ezlunch or myKindo account with any school or organisation: [Click here](#) to register using the email address the school has on file for you.



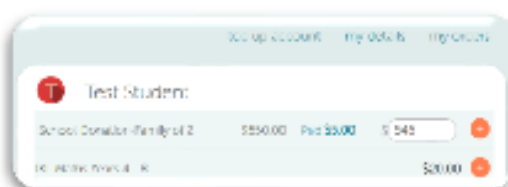
Payments

There are a number of ways you can choose to top-up your account, and this can be done at the checkout, or by selecting the 'top up account' option at any time.

top up account	my details	my orders	mykindo
POLi	No fees. Instant transfer. **RECOMMENDED**		
Credit/Debit Card	50 cent charge + 2.5% fee. Instant transfer. Visa / MasterCard / American Express and China UnionPay available.		
Bank Transfer	No fees. Allow 2 days for processing.		

Purchases

There are TWO types of transactions you can make using myKindo: paying personalised payment requests for your students; purchasing optional items.



Personalised payment requests appear at the top of your screen under your student's name.

Pay the full amount by clicking '+' next to the item or make a part payment, by changing the amount before clicking the '+' (if available).

There are also the Kindo shop/optional items. Click on your child's initial next to an optional item to add to your cart.



Once you have made all your purchases click on the **Checkout** option to complete your transaction.

If you have sufficient funds, then simply click **Place Order** at the checkout and you're done!

If you have insufficient funds, you will be required to top up to complete your order.

Your order will automatically go through to the school and you will receive an email receipt confirming your top-up and/or purchase!

mykindo App

mykindo app is also available to download for both android and iPhone.

Need assistance? Our Kindo helpdesk is open 8am to 4pm weekdays.
Freephone: 0508 4 KINDO (0508 454 636) Email: hello@mykindo.co.nz
Online support: support.mykindo.co.nz

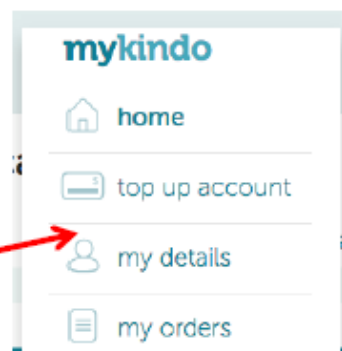
Setting up an Automatic Payment to your myKindo account

Making regular payments into your myKindo account means you will always have funds available when you need them!

Having an automatic payment set up into your myKindo account is easy.

Login to our Kindo school shop and click on the **top up account**.

Under the Bank Transfer (allow two days) option, will be your personal details and the Kindo bank account number.



These are all the details you need to set up an Automatic Payment with your bank.

IMPORTANT: You must include the Reference number (your member number) so we can ensure the funds are transferred into the correct myKindo account.



Need assistance? Our Kindo helpdesk is open 8am to 4pm Monday to Friday.

Freephone: 0508 4 KINDO (0508 454 636)

Email: hello@myKindo.co.nz

Online

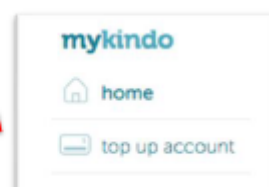
support: support.myKindo.co.nz

Setting up an automatic payment into your myKindo account

We've set up our Kindo school shop to make it easy for our families to pay for school costs anywhere, anytime. It's open 24/7 and is our preferred method of payment.

If you have a regular automatic payment going to our school account, please switch this to your myKindo account by following these instructions.

- Login to your myKindo account. [Create Account](#) [Login to your account](#)
- Click on 'top up account' either on the banner, or under the 'mykindo' drop down.



- Set up your new automatic payment by using the personalised instructions under the 'Bank transfer' heading on the right.

These include the bank account details you will need to set the payments to and your member number which needs to be included as the reference.

Bank Transfer (allow 2 days)

Top up your account by bank transfer, internet banking, or by automatic payment.

Please include this information with your deposit:

Please allow up to 2 working days for funds to be transferred. You will receive a top up receipt when funds are received.

NOTE: *this is not recommended for same day/next day lunch orders, or items that are closing within 48 hours as orders will not be processed until funds have cleared and may get missed!*

You can choose to drip feed your funds into your myKindo account, and when you have enough funds, make a payment in full, or you can choose to make part payments on some items.

Having a credit on your account, means for a faster transaction process at the checkout too!

SAVE TIME - PAY ONLINE

Sports Announcement / News

CONGRATULATIONS to Aimee Bright on her epic performance in sailing. She has won the U19 New Zealand Windfoiling National Championship. She also placed 3rd in the senior woman's division. Aimee will be joining the NZ Youth Sailing team when they tour to Netherlands in July this year.



Senior Netball Trials 2022 (Years 10-13)

When: Friday 11 March

Time: 2.15 pm-4.30 pm

<https://forms.gle/xBDEHyxAY4aPDAup8>

Please wear suitable clothing and footwear.

College Sport North Harbour Swimming Zone Day 2022 : Years 9-13

Sign Up for College Sport Auckland Swimming Zone Day.

When: Thursday 24 March

Where: Sir Owen G. Glenn National Aquatic Centre

Cost: \$20 (If using school van) \$10 (if traveling with a parent)

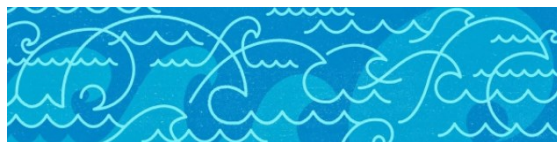
Time Frame

Warm Up 9.00-9.20 am

Race Start 9.30 am

Finish 1.00 pm (approx.)

<https://forms.gle/rTn2PThF8uD89XaVA>



Whangaparaoa College Physio & Hand Clinic

For Students & Teachers - convenient treatment at school

Neck or Back Pain
Sports Injuries / Sprains incl Hands
Physio Rehabilitation after Plaster or Operations
Specialised in Teen Sports/Growth Injuries



Due to current Omicron situation, the physio & hand clinic will not be available for treatments at the College for Term 1 2022.

We welcome students and teachers to be treated at one of our other clinics.
To make an appointment or Discuss Your Needs, please contact:

Whangaparaoa - 10 Wade River Rd, ph. 09 424 1309
Silverdale - Medical/Surgical Building, 7 Polarity Rise, ph. 09 426 6619
Orewa - 28 Centreway Rd, ph. 09 426 1945

Proud To Support WGPC Sports Teams

For all Sports Updates be sure to visit our Website
<https://www.wgpcollege.school.nz/Arts++Culture/Sports>
or Facebook Page

<https://www.facebook.com/people/Whangapar%C4%81oa-College-Sport/100057346273883/>

For any sports enquiries, email sports@wgpcollege.school.nz

Upcoming Events

All events are Covid-dependent

March	10-11	L2PHED Camp
	11-13	Silver DoE Qualifying Journey
	11	Senior Netball Trials
	11	L1HEED Year 7 Activity Day
	14	Year 7/8 Triathlon Give it a Go
	15	L3GEOG Orewa Trip
	16-18	L2OUED Tawharanui Camp
	22	Facebook Live Event—NCEA Information Evening
	24	L1GEOG Shakespear Trip
	29	Facebook Live Event—Alumni

Key Dates for 2022

April	14	Last Day of Term 1
May	2	First Day of Term 2
June	6	Queens Birthday Holiday
	24	Matariki Public Holiday
July	8	Last Day of Term 2
	25	First Day of Term 3
September	30	Last Day Term 3
October	17	First Day Term 4
	24	Labour Day Holiday
November	2	Last Day for Seniors
	7	NZQA Exams Start
December	6	NZQA Exams Finish
	12	Last Day of Term 4

2022 Staff Only Days

These days are in line with the MOE Accord Days for preparing for new curriculum/assessment:

Wednesday 9 March

(4th Staff Only Day from 2021 which was postponed).

Monday 9 May

Friday 19 August

Friday 25 November





THE LION FOUNDATION

Thank you very much!



A huge thank you to The Lion Foundation for providing us with funding for our school van

lease for 2022! We are exceptionally grateful for their generosity and support.

Our school vans are an integral part of Whangaparāoa College, used for school trips, EOTC, sports team events and much more!



COAST YOUTH
COMMUNITY TRUST

Hibiscus and Bays Local Board

Auckland Council



NEW WORLD
Whangaparaoa

your community store

open 7am - 10pm ♦ 7 days a week

570-588 Whangaparaoa Road - 09 869 9013



Fly Buys

Employment Issues

Consumer Complaints

Legal Questions

Tenancy/Landlord issues

Relationships

Budgeting & Financial

Neighbours & Fences

Family Matters

Free, confidential, independent info and advice

Not sure? ASK US.

Citizens Advice Bureau Hibiscus Coast
Orewa Community Centre, 40-46 Orewa Square
reception.hibiscuscoast@cab.org.nz 09 426 5338

0800 367 222 www.cab.org.nz

Citizens Advice Bureau

Ngā Pou Whakawhirinaki o Aotearoa

Contact Us:

Telephone: 09 424 9177 Fax: 09 428 4794 E-mail : enquiries@wgpcollege.school.nz

Street Address:
8 Stanmore Bay Road
Whangaparāoa
Auckland
New Zealand

Postal Address:
PO Box 775
Whangaparāoa
Auckland 0943
New Zealand