



# WHANGAPARAOA COLLEGE

Together □ Believe □ Achieve □ Ngātahi whakapono tutuki

## Term 2 Issue 3

### In This Issue

- From the Principal's Desk
- Upcoming Events
- WGP College Reception
- Alumni Foundation Corner
- Pasifika Minister Visit
- Enviro Group
- Sailing
- Matariki
- Sports News
- From The Nurse
- Community Notices

### Quick Links

[Link to Parent Portal](#)

[Link to College Calendar](#)

[Link to NZQA Website](#)

[Link to Careers Page](#)

## From the Principal's Desk

Kia ora e te whānau o Whangaparāoa

We hope that everyone is keeping as well and healthy as possible with the winter wet and cold setting in. We appreciate that along with the annual colds and flus, Covid and the inclement weather have added to learner absences. If your child has been away from school, please ask them to try and catch up with their school work as best they can. It is vitally important that they attend school as much as possible to keep up with their learning. This will also set them up with good routines for life after school.

As we navigate the current pandemic and the extra pressures it's adding to our personal daily lives, there are obviously also some pressures on all our school systems, including our reception area.

At this stage, the capacity to serve parents is limited which means that we need to make sure we use our capacity wisely. Please see the information later in this newsletter regarding how and when we can assist. This is beyond our staff's control so we ask that you treat them and speak to them with courtesy and respect, they are doing their best in sometimes challenging circumstances to help everyone. We appreciate your cooperation and understanding.

We are looking forward to our Matariki Fiafia Festival on Thursday 23 June and hope that you and your whānau will be able to join us. Please see the poster in this newsletter.

**School will close at 12.30 pm on Thursday 23 June.** Learners are encouraged to stay and enjoy the performances between 1 and 5 pm.

*E tu kahikatea, hei wakapae uroroa, awhi mai, awhi atu, tātou, tātou e*  
We all help one another and together we will be strong

Ngā mihi

Steve McCracken



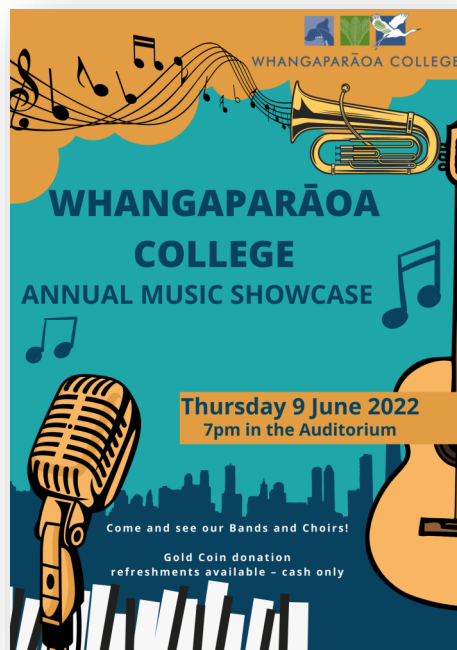
## Upcoming Events / Dates to Remember

All events are Covid-dependent

<b>June</b>	9	Music Festival
	9	Hockey Girls Zone Day
	9	Yr 7 Howick Village 7KNO 7RST
	10	Yr 7 Howick Village 7CTI 7WLL
	13	Yr 7 Howick Village 7WINK 7FTR
	14	Yr 7 Howick Village 7MCM 7TURK
	14	Rugby 7's North Harbour Zone Day
	15	Yr 10 Dodgeball
	16	Yr 7 Howick Village 7JAR
	16	L1HEED Tree Adventures
	17	L1HEED Jump Trampoline
	20-21	Gateway H&S Course
	21	Table Tennis Zone Day
	22	L3CHEM Spectroscopy
	22	Pavement Art
	22	Rugby Boys Zone Day
	23	<b>School closes at 12.30 pm</b> <b>Matariki Festival ALL WELCOME</b>
	24	Matariki Public Holiday
	25-26	DoE Silver Practice

## Key Dates to Remember

<b>July</b>	8	Last Day of Term 2
	25	First Day of Term 3
<b>September</b>	30	Last Day of Term 3
<b>October</b>	17	First Day of Term 4
	24	Labour Day Holiday
<b>November</b>	2	Last Day for Seniors
	7	NZQA Exams Start
<b>December</b>	6	NZQA Exams Finish
	12	Last Day of Term 4



### OUR FUTURE VISION NGĀ MOEMOEĀ



Whangaparāoa College sits at the centre of the Whangaparāoa community, supporting and being supported by our local environment but connected to the world through digital technology.



Through our Mindfulness and Hauora programmes we instill a sense of belonging and self belief in our learners, allowing them to be self driven, critical thinkers and able to identify opportunities.



Our curriculum and pathway support enables our learners to achieve their personal goals and become outstanding members of the wider community.

Together Believe Achieve  
Ngātahi Whakapono Tutuki

### Āhuatanga Whangaparāoa



Self-Determination | Potential  
Success | Uniqueness



Cultural Knowledge & Pride | Identity  
Cultural Responsiveness | Cultural Awareness



Growth | Wellness | Nutrition | Sustenance



Hospitality | Kindness | Support  
Awareness | Mana



Guardianship | Protection | Mauri



Kinship | Relationships | Whānau

## Whangaparāoa College Reception

As we navigate the current pandemic there are some pressures on our school systems, included in this is our reception area.

At this stage the capacity to serve parents is limited which means that we need to make sure that we use our capacity wisely. We are also wanting to minimise disruptions to class time.

Actions that reception can complete for parents are:

- Urgent matters (e.g. family member is ill in hospital)
- Safety concerns
- Collection of your child/children (we will need 2 hours notice to call them up)

Services we will be **unable** to undertake are:

- The collection and distribution of lunches/food
- The collection and distribution of PE uniform
- The collection and distribution of instruments
- The collection and distribution of devices

Please note that parents are not permitted to collect their child/children directly from the classroom.

The reasons for lack of attendance and absences will need to be communicated via phone call to the absentee line (09 424 9177), via the school app (SchoolAppsNZ) or by emailing [absences@wgpcollege.school.nz](mailto:absences@wgpcollege.school.nz), not just the learner's Kaiārahi please.

If the matter at hand is a financial issue, please contact Alanna Burrow-Smith at [alannabu@wgpcollege.school.nz](mailto:alannabu@wgpcollege.school.nz)

If your child is injured or feeling unwell, they are to go and see the nurse who will be able to provide assessment and treatment. The nurse will then decide if they need to go home in which case she will communicate with you.

Please note that as the rules about the use of phones in classrooms have been tightened up, your communication directly with your child/children is likely to be limited to interval (11.00 - 11.25) and lunchtime (1.30 - 2.15).

Thank you for your understanding and cooperation. We ask that you show respect and speak to our staff politely, they are doing their best to assist under sometimes trying circumstances.



Young people are physically growing, their brains are still developing, they are learning and they are active. Even walking around the school requires energy. Breakfast is really an important meal for our children. Children who eat breakfast have more stable moods and achieve better academically. We would appreciate support from whānau to encourage your child to eat breakfast or bring some food that they can eat before school starts.



## Alumni-Foundation Corner

Jenna Finlayson : 2004—2011

*I currently live and work in Seattle as a Senior Software Engineer for Microsoft. After school I completed a Bachelor of Engineering, specialising in Software Engineering, at the University of Auckland. I first did an internship in Seattle with Microsoft while still at university, and after finishing my studies, I started full-time in the Vancouver (Canada) office. After 18 months I transferred to the Seattle headquarters and have been here ever since working on the OneDrive team. I'm fortunate to be able to mentor several new-hires and interns every year at Microsoft, helping new graduates navigate their first full time job and often in a country they've not lived in before. I'm also involved in recruiting, travelling to universities in Auckland and Sydney to speak at events and hold mock interviews to attract new talent.*

*Some of my favourite memories from WGP College are playing in the jazz band, being a part of the band for the musical productions, being a Bellissimo groupie, and music composition and performances with Miss Jones' class. I also loved playing netball and lacrosse with my friends!*

*To current learners, have fun and try out new things. My fondest memories were my extra-curricular activities. Yes, science and maths were important for me getting into engineering, but mixing it up with some music and arts made it all the more enjoyable. And of course, I'm going to be biased and suggest trying out some computer programming if you get the chance!*



## Whangaparāoa College Alumni-Foundation PLEASE SPREAD THE WORD!!!



We are excited to announce that we have recently formed a Whangaparāoa College Alumni-Foundation committee. Our first step is to create a database of our Alumni (past learners, staff, parents, whānau, and community members). If you, your child or someone you know has been associated with Whangaparāoa College in some way, please can you and/or they fill in this [brief Google form to be added to our database](#).

Our two main purposes of this foundation are to provide diverse opportunities and to create new and renew old connections.

There is an upcoming fundraising event that you and/or others may be interested in attending—**SAVE THE DATE—Hibiscus Coast Spring Ball, Saturday 3 September 2022**. Funds raised will benefit the learners of Whangaparāoa College.

## ART WANTED!!!

On Saturday 3 September there are plans for a Hibiscus Coast Spring Ball. The ball is a fundraiser for WGP College learners—you will be able to nominate where your \$ go to—sports, performing arts, or learners in financial need to pay for things such as camps, extra-curricular costs, uniforms, etc. that some may not be able to afford.

As part of the ball fundraiser, we are wanting to run a silent Art Auction. We therefore need art to be donated for this. Perhaps you, or some whānau or friends have some pieces of artwork in the back of cupboards or under beds at home, and you have nowhere to hang them? Perhaps you, or someone you know is an artist that would like to paint or draw something to donate to the auction?

Any queries, or to donate art, please see Lisa White or email [lisawh@wgpcollege.school.nz](mailto:lisawh@wgpcollege.school.nz)





## Pasifika Minister Visit

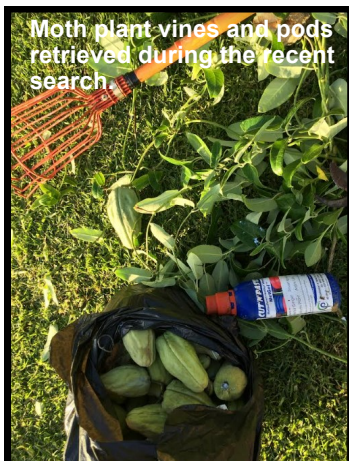
Minister Aupito William Sio is the Minister for Pasifika People and the Associate Minister of Education (Pasifika Peoples). He visited us on Friday 27 May, along with Marja Lubeck, a local Labour Party MP. Our learners welcomed the guests with a pōwhiri. The Minister asked our Pasifika learners how well supported they felt and any concerns they had. Our Pasifika learners entertained the Minister with a dance before he left us for his next engagement.



## Enviro Group

Recently, a group of WGP learners gathered to remove rubbish and pest plants from areas around the school (primarily moth plants and woolly nightshade). These are a big problem on the bank behind the field and hurt our native plants' chances of growing. We hope to get rid of them in time.

If this sounds like something you would be interested in helping with, these sorts of hunts for rubbish and weeds are being hosted on Thursdays after school, with those involved meeting in S2. If possible, please bring gloves and shoes with good grip!



Moth plant vines and pods retrieved during the recent search



Jess and Malia who collected 2 big bags of rubbish



Nicole and Ethan who destroyed woolly nightshade and moth plants



## Celebrating Matariki 2022

We invite you to join Whangaparāoa College in celebrating Matariki for 2022. With Māori and Pasifika performances from Whangaparāoa, Ōrewa, Mahurangi and Kaipara learners, we welcome the community to join us in celebrating the Māori new year. There will be cash only market stalls available at the festival and if you would like to order a Hāngī please complete the google form below. Pre orders only for the Hāngī and sales will close on 21 June so make sure you get your order in. Payment for hāngī will be cash on collection.

[https://docs.google.com/forms/d/e/1FAIpQLScwbs6W\\_Xh2U3NaURr44ED0icLDmd\\_I9YQ1s7RP3eV90DHcWw/viewform?usp=sf\\_link](https://docs.google.com/forms/d/e/1FAIpQLScwbs6W_Xh2U3NaURr44ED0icLDmd_I9YQ1s7RP3eV90DHcWw/viewform?usp=sf_link)

Matariki hunga

Matariki ahunga nui

A COLLABORATIVE WHANGAPARĀOA COLLEGE & OREWA COLLEGE EVENT

LET'S CELEBRATE

# Matariki

2022

*You are invited to join us for our  
Matariki Fiafia Festival  
a showcase of dance and culture*

 **VENUE:** Whangaparāoa College  
**DATE:** Thurs. 23 June 2022  
**TIME:** 1.00-5.00 p.m. 

**KAPA HAKA, PASIFIKA PERFORMANCES,  
HĀNGI, FOOD STALLS**

*hau mai, haere mai*



**WHANGAPARĀOA COLLEGE**  
Together Believe Achieve Ngātahi Whakapono Tutuki



**OREWA COLLEGE**



**Pacific Integrated  
Foundation Trust**



**Hibiscus  
huahana**



## NZ Music Month at Whangaparāoa Library

Our NCEA music class performed at the Whangaparāoa Library. It was a great chance to perform for the public and our Year 10 music class went over to support and enjoy it too!



An awesome open rehearsal for the Big Band at Whangaparāoa Library with lots of applause and cheering from the local community.

**ICAS Assessments are being held in August. The ICAS Assessments series is designed to assess a learner's ability to apply classroom learning in new contexts, using higher-order thinking and problem-solving skills. The questions in the ICAS Competition are a training ground for the core skills at the heart of STEM. In tracking them, learners build the type of creative problem solving, discernment and analytical thinking that will prove essential to future employers. All learners wanting to do the ICAS assessments, please give your names to Mrs Menezes in S11.**

### WHANGAPARĀOA COLLEGE *Enrolment Dates*

#### Information Evening

Wednesday 3 August @ 7.00pm

#### School Tours

Wednesday 10 August @ 9.15am

Tuesday 25 October @ 12.30pm

#### Year 7 Enrolment Interview Evenings

*Walk-ins on each date 4.00pm – 6.30pm*

Thursday 11 August

Wednesday 17 August

Tuesday 6 September

Thursday 27 October

Wednesday 9 November

(Enrolment Interviews for Years 8-13 will be with appropriate year level Deans, via appointment or online)

HIBISCUS COAST SPRING BALL

# THE ROARING TWENTIES

Saturday September 3rd 2022 | 6:30 PM

The Beer Spot

Coast Plaza 719 Whangaparāoa Road,  
Stanmore Bay, Auckland 0930

Fundraising for Whangaparāoa College Tamariki

**SAVE THE DATE : Banish the Covid blues and dance your way into spring whilst fundraising for our learners at the same time. Join us at the Hibiscus Coast Spring Ball**

More info to follow and on our facebook page [Hibiscus Coast Spring Ball events page](#)

But for now, dear whānau, friends and local businesses,

**SAVE THE DATE ....** Tell everyone you know about this event ... and let us know if you can help us out with this request .....

We are looking for any person or business able to offer sponsorship of \$400 and upwards to cover specific costs such as the band fees, catering, photography etc in exchange for advertising at the event and via social media posts related to the ball. We are also looking for BIG VALUE prizes, eg a free week at a Bach, a Waiheke Island Wine Tour, Holiday to Fiji etc to help with fundraising. If you can help with this please call Kate on 027 444 1434.

Looking forward to seeing you all at the ball!

Thank you—the Ball Committee



## Sports Announcements/ News

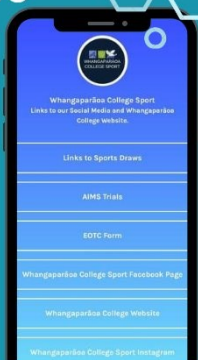
### Football Zone Day

The girls had an outstanding day on 31 May. They lost only one game to the eventual winners—Northcross. They had the experience of a shoot out in the quarter finals. Thanks Will for coaching the girls.



Congratulations to Year 10 learner Torbein Beauvais for making the NZ Māori Rugby League 15s Tama Tournament Team. Well done Torbein!

### LINK IN OUR BIO TO WINTER SPORTS DRAWS



Link for our Winter Sports Draws

[https://linktr.ee/](https://linktr.ee/whangaparaoa_college_sport)

[Whangaparaoa College Sport](#)



### WHAT'S HAPPENING THIS WEEK

Monday  
Basketball  
Leisure Centre 4 pm - 6.30 pm  
Year 13 JB 5.15 - 6.45 pm  
Queens Birthday 4.50 pm - 6 pm  
Tuesday  
Hockey year 7/8  
  
Netball Year 7  
4 pm - 6.30 pm  
Wednesday  
Football Girls  
  
Boys Hockey  
  
Basketball JBL Yr 9/10  
6.15 pm @ Wgp  
Thursday  
Lacrosse  
  
Girls Hockey  
  
Basketball U17/U19  
4pm - 7pm  
  
Netball Year 8  
4 pm - 6.30 pm

### WHAT'S HAPPENING THIS WEEK

Friday  
Waterpolo Yr 9/10  
  
Saturday  
Senior Netball  
8 am - 11 am  
  
Rugby  
1st XV  
U15  
U14  
  
Sunday  
Waterpolo Year 7/8

For any sports enquiries, email [sports@wgpcollege.school.nz](mailto:sports@wgpcollege.school.nz) or follow us on Facebook [Whangaparaoa Sport Facebook Page](#) or Instagram [Whanga College Instagram Page](#)



## BLAKE Inspire Sailing Program

The BLAKE Inspire for Sailors program was an amazing opportunity that we were extremely fortunate to be a part of. The program took place in two segments. The first on Steinlager 2 where we sailed around the Hauraki Gulf and visited Tiritiri Matangi Island. The second was on land where we visited the Emirates base and learned about all their new projects. Throughout the whole trip the importance of the environment was emphasised on. Meeting all the other like minded sailors helped to give a sense of purpose. We got to make connections with these people that will last for years to come. [Isi Booth 13MOA]

I'm still buzzing that we got to sail on Sir Peter Blake's boat, Steinlager 2. We got the chance to helm the boat and study phytoplankton at Waiheke Island then visited Tiritiri Matangi Island. We learned about Sir Peter Blake on the boat which showed us his leadership, great seamanship, and the importance of looking after the environment. Having a role on the boat whether we were helming, putting up the sails, or doing the dishes helped to give us the chance to show initiative and get an idea of what we were capable of. We were brought right to the forefront of environmental technology which was exciting and inspiring.

We came back with loads of ideas on how to improve our local environment at the Gulf Harbour Yacht Club and at Whangaparāoa College - for example, implementing more water bins, campaigning for more marine reserves, and creating better waste management systems. We would absolutely recommend the BLAKE Inspire program to anyone with a passion for the environment and sailing because you take away so much inspiration, confidence and information, along with a deeper understanding and appreciation for the marine environment and a million new ideas on how we can better protect it. [Scarlett Crosby 13LGO]



# FROM THE NURSE

## FREE HEARING SCREENING FOR YEAR 9 LEARNERS



WGP College will be participating in a study that offers FREE hearing screening and education to all Year 9 learners on **13 - 16 September**.

ALL parents/caregivers of Year 9 learners will receive an email with information from the National Foundation for Deaf and Hard of Hearing.

If you would like to opt your child out of this screening please email [courtneyb@wgpcollege.school.nz](mailto:courtneyb@wgpcollege.school.nz)

*We offered this to Year 9s last year but unfortunately the program did not proceed due to lockdown. Unfortunately we are unable to offer the screening to the learners who are now Year 10.*

## Physiotherapy and Hand Therapy

We have a physiotherapist onsite 3 days per week to treat learners and staff. Under ACC and with a referral from the school nurse, the first treatment is free and further treatments are \$10.

We have a hand therapist onsite 2 days per week. All treatment under ACC is free.

If the school nurse is referring a learner to the physio or hand therapist, she will get permission from parents / caregivers.

The number to call to make an appointment to see a hand therapist or physio therapist at school or clinic is 09 426 6619



## UNWELL LEARNERS:

If your child becomes unwell at school with Covid-19 symptoms, you will be contacted to collect them (as per our usual process). The nurse can give you a R.A.T. to do at home.

If the result is positive, your child will need to isolate for 7 days (including day 0).

If the result is negative and symptoms persist, your child will need to retest in 1-2 days.

If the result is negative, the learner can return to school when they are well.

## LEARNERS WITH MILD SYMPTOMS AT SCHOOL:

If learners present to the Health Clinic with mild stand-alone symptoms such as a headache, or a runny nose, or fatigue, then the school registered nurse may opt to do a R.A.T. with the learner to determine if they are safe to return to class.

If the result is positive, whānau will be contacted to collect the learner. Whānau will be advised to report the results via 'My Covid Record' or if the learner is under 12, call 0800222478. The learner will need to isolate for 7 days (including day 0).

If the result is negative and the learner is essentially well, the learner can safely return to class. If further symptoms develop or symptoms worsen, please keep the learner home and retest in 1-2 days.

Any concerns related to this, please email [nurse@wgpcollege.school.nz](mailto:nurse@wgpcollege.school.nz)

**COVID BOOSTER VACCINATION : 16 & 17 year old learners are now eligible for Covid Booster Vaccinations. You can make an appointment at Whangaparāoa Medical Centre on 09 4248618.**

## MASK WEARING

Facemasks continue to be a tool that helps reduce the spread of Covid 19. We are trying to reduce the risk of Covid spreading in our school community by:

- Wearing facemasks indoors.
- Keeping classrooms well ventilated.
- Encouraging the use of hand sanitiser.
- Encouraging good cough / sneeze etiquette.
- Asking unwell learners and staff to stay home if unwell.
- Regularly using surface cleaners in our classrooms.

## PLEASE WEAR A MASK



Please ensure your child has a mask and a spare in their bag. However, **if they do not have a mask or spare, these can be purchased at the Kura Kai Café for \$1 each during morning tea or lunch time.**

If your child has a mask exemption please email a copy through to nurse [nurse@wgpcollege.school.nz](mailto:nurse@wgpcollege.school.nz).

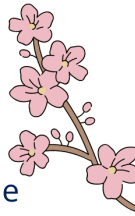
**Please ensure your child brings a full water bottle to school each day.**

**The nurse has a supply of moon cups and period pants available FREE. First in first served.**



## Get amongst it!

Whangaparāoa College is thrilled to be welcoming a group from South Korea for a visit in Term 3. They will arrive the last weekend of the school holidays - **23 July**, and depart on **12 August**.



We will host them daily here at our college and can't wait to share our school, culture and friendships with them. We want to offer our College Whānau the first opportunity to be a host family, to one or two of these students.



This is a wonderful opportunity to be a part of and very rewarding too, as we create memories for these students to take back home and share with their families.

Your hospitality will be remunerated. If this is your first-time hosting, we will be onboarding and supporting everyone with this experience.

**It is a good feeling to be back hosting our friends from around the world, it has been far too long.**

If you would like to learn more about being a Host Family, please either drop me a line [suemck@wgpcollege.school.nz](mailto:suemck@wgpcollege.school.nz) or call me on **424 9177 ext. 238**

Talk soon - Sue



# STAR

Secondary Tertiary Alignment Resource

The STAR Programme is a resource for schools that is aimed at assisting secondary school learners into finding a suitable pathway into work or further study. STAR is commonly known as a "Taster" course for an industry a learner may find appealing as a career option. The STAR Courses are a fun, practical way of having a taste of the industry along with the opportunity to gain NZQA unit standards. Over 50 learners attended various STAR Courses over the holidays, Barista, Intro to Armed Forces, Animal Care and Flight Attending. July Courses are available on the school website.

<https://www.wgpcollege.school.nz/Learning/Careers/STAR+Courses.html>

**STAR Courses are fully funded except for the Defensive Driving Course**

  
**NORTH SHORE SCHOOLS**  
CAREERS & PATHWAYS EXPO

**NORTH HARBOUR STADIUM**

**8<sup>th</sup> JUNE** 1:00PM-3:00PM  
4:30PM-8:00PM

**9<sup>th</sup> JUNE** 9:30AM-3:00PM  
4:30PM-8:00PM

Meet with over fifty different organisations including Universities, Polytechnics, Tertiary Training Providers, & Industry representatives from around New Zealand



### 'Give a Kid a Blanket'

is a community action of kindness running Auckland wide every year.

Follow #giveakidablanket

**When:** From Mon 30th May - 24th July

**What to donate:** New and excellent condition pre-loved blankets, sleeping bags, duvets, baby sleep sacks, winter bedding, duvet covers, pyjamas, jumpers, winter coats, beanies, socks, new pillows, new hot-water bottles.

All second hand items need to be cleaned/washed by the donor prior to donation. For several items, it would be great if they are bagged/boxed.

**Where:** donations to Mrs Law in B2 or C-Block Staffroom

**House Points:** Collect points for your house! Let Mrs Law know your house when you bring your donation.

## WANTED—Untreated plywood, timber or mild steel off-cuts

Our Technology workshop would very much appreciate the opportunity to collect and use any untreated plywood (400mm plus), wood, timber or mild steel off-cuts that are being thrown in the skip from Builders, Cabinet Makers or Engineers. Our learners will use these materials for projects they are working on. Please email Colin Watts [colinwa@wgpcollege.school.nz](mailto:colinwa@wgpcollege.school.nz) THANK YOU.



If you would like to learn more about being a Host Family, please either drop me a line [suemck@wgpcollege.school.nz](mailto:suemck@wgpcollege.school.nz) or call me on 424 9177 ext. 238

Talk soon - Sue



your community store

open 7am - 10pm • 7 days a week

570-588 Whangaparaoa Road - 09 869 9013



Employment Issues  
Consumer Complaints  
Legal Questions  
Tenancy/Landlord Issues  
Relationships  
Budgeting & Financial  
Neighbours & Fences  
Family Matters

Free, confidential, independent info and advice

Not sure? Ask us.

Citizens Advice Bureau Hibiscus Coast  
Orewa Community Centre, 40-46 Orewa Square  
[reception@hibiscuscoast.cab.org.nz](mailto:reception@hibiscuscoast.cab.org.nz) 09 426 5338  
0800 367 222 [www.cab.org.nz](http://www.cab.org.nz)  
Citizens Advice Bureau



THE LION  
FOUNDATION  
*Here for good*

Hibiscus and Bays  
Local Board  
Auckland Council



Contact Us:

Telephone: 09 424 9177 Fax: 09 428 4794

E-mail : [enquiries@wgpcollege.school.nz](mailto:enquiries@wgpcollege.school.nz)

Street Address:  
8 Stanmore Bay Road  
Whangaparāoa  
Auckland  
New Zealand

Postal Address:  
PO Box 775  
Whangaparāoa  
Auckland  
New Zealand, 0943