



WHANGAPARAOA COLLEGE

Together □ Believe □ Achieve □ Ngātahi whakapono tutuki

Newsletter

Term 3 Issue 2 2020

*When you build those relationships and your students know you care,
and they love coming to school... That's magic.*

In This Issue

- From the Principal's Desk
- Parent By-Election
- Congratulations
- Sound and Lighting
- Science
- Year 9
- Year 7 Leaders
- Sport
- Music Department
- Enterprising Year 12
- From the Nurse
- Attendance Matters
- Carparks, Drop-off and Pick-up Zones
- Upcoming Events
- Community Notices
- Sponsorship and Support

Quick Links

[Link to Parent Portal](#)

[Link to College Calendar](#)

[Link to NZQA Website](#)

[Link to Careers Page](#)

Contact Us

Telephone: 09 424 9177

Fax: 09 428 4794

E-mail :

enquiries@wgpcollege.school.nz

From the Principal's Desk

Malo e lelei
("Greetings", being Tongan Language Week)

It is always a pleasure to make contact. I want to say a big thank you for the way everyone has worked together, looked after each other and remained calm during these very strange times. Hauora – our overall wellbeing, and that of those close to us – is paramount!

In light of the recent lockdown, we are needing to make yet another revision to our school calendar. We are hoping to give our Year 13's an "as positive as possible" ending to their schooling. We are hoping to be in Alert Level 1 by the end of term so we can go ahead with the School Ball on Saturday 26 September. There will be changes this year with how we do such things as school practice examinations and prizegivings. Also, enrolments cannot be done in the usual way under Alert Level 2 – so we are using an online process (see our website).

Kaiārahi and other teachers are spending one-on-one time with Year 13 learners to plan how to use the remaining time to achieve their goals and be ready for the next steps. We are encouraging learners to be very strategic with their use of time. For example, I help with the Year 13 Business Studies class, and most of them will soon have 12 or more credits in this course (12 is the number needed for a subject to contribute towards UE). After that, their time in my class may be better used working on another subject (to ensure they get the required 12 credits there) or preparing for an external examination in another subject. Each learner, and how they use their time, is considered on a case-by-case basis.

And through it all, we will carry on (albeit, in our modified way) with our core business of teaching and learning. As I walk around the school and visit classes, it is good to see and have a sense of the calm engagement.

Ngātahi, whakapono, tutuki
(Our school motto –Together, believe, achieve)

Ofa atu
("Best wishes")
James Thomas, Principal

Whangaparaoa College Parent By-Election Notice

Street Address:

8 Stanmore Bay Road
Whangaparaoa
Auckland
New Zealand

Postal Address:

PO Box 775
Whangaparaoa
Auckland 0943
New Zealand

Nominations are invited for the election of two parent representatives to the Whangaparaoa College Board of Trustees. An email calling for nominations has been sent to all eligible voters. You can nominate another person to stand as a candidate – both of you will need to email the Returning Officer, you to advise who you're nominating and them advising who they've been nominated by and their acceptance; or you can nominate yourself via email.

Nominations close at noon on **Friday 25 September 2020** and should be accompanied by a candidate statement and photograph. The voting roll is open for inspection at the school and can be viewed during normal school hours. There will also be a list of candidates' names, as they come to hand, for inspection at the school.

Voting, if necessary, will also be done electronically and will close at noon on **Friday 9 October 2020**.

Signed: Caroline Butland carolinebu@wgpcollege.school.nz
Returning Officer

Congratulations

Lucas Phan achieved the highest award possible, an Elite Award in the Education Perfect English Championships 2020. He achieved a 65th placing out of many thousands of participants worldwide. Lucas was acknowledged in class last week with the presentation of a pin signifying his achievement.

To Whangaparaoa College,

Well done to everyone who took part in the EPEC! To acknowledge the hard work of the students who earned an Elite award, please present the following students with an Elite badge:

Lucas Phan



Sound and Lighting

We have a group of learners in our Sound and Lighting team from across all Year levels that assist with Morning Koreros, Assemblies, Productions, Sporting events, Prizegivings etc.

We would like to say a huge thank you to **Ricoh** who has kindly supplied our current team with a pair of headphones each.

Thanks again Ricoh for supporting our Whangaparaoa College Sound and Lighting team.



Science

NZ Engineering Science Competition

This annual competition is a problem solving event for teams of senior secondary learners organised by the University of Auckland's Department of Engineering Science, and sponsored by Orion Health and Fisher & Paykel Healthcare. This fun and challenging competition is for teams of three or four Year 12 or 13 learners who are interested in Mathematics and Science.

This year's Fermi problem:

How many satellites can be launched into orbit before astronomers on earth can no longer observe the night sky without interruption?



8SCIE MOTAT 2020

Year 8 Science classes went to MOTAT in Week 2 to learn about and build a Rube Goldberg machine as part of the Simple Machines Physics topic. Learners were also given a chance to explore the new Simple Machines exhibit, and other MOTAT exhibits before going on a Tram ride.

Later in the term, learners will work in small groups to build their own Rube Goldberg machine, simple machines that work together to complete a simple task in a complicated series of steps. The video linked [here](#) shows an example of the single stage Rube Goldberg machines made by each group of learners, all joined together to make one long complicated machine.



Year 9

Social Action – Year 9 Tree Planting at Shakespear Regional Park

Recently Year 9 learners have visited Shakespear Park to plant a variety of trees such as Kanuka, Manuka, Ake Ake, Karamu and Cabbage. This was a joint initiative between Social Studies, Science and the Rangers at the park. We have done this not only to advance our movements against pollution but to also restore the native forest and to create a new habitat for native Kiwi and Skinks. We have, as a collective, aimed to plant about 2500 trees and we hope that this number will continue to grow as we work on making New Zealand a better place. Come on Whangaparaoa! We can do this!

Zachary Macann and Chase Wilkinson of 9PEA

For more pics, click [here](#)



Year 7 Leaders

Twenty Year 7 leaders attended a full day training camp at Red Beach Surf Club. The aim of the camp was to empower and enable our budding leaders to take on various leadership roles within the College and our feeder primary schools. The leaders participated in various land and water activities that pushed them outside their comfort zone and developed their leadership skills.

For more pics, click [here](#)



Sport

Sports Camp

We took 35 Year 8 learners down to Totara Springs for Sports Camp in early August. This was a really busy and fun week, with many sports being played from Rugby and Netball, to Petanque and Croquet, competing against 9 other teams. Our learners did so well through the week, reaching 11 semi-finals in Rugby, Netball, Mixed Soccer, Tag, Mixed Touch, Girl's Hockey, Girl's Basketball, Boy's Basketball, Boy's Table Tennis, Girl's Table Tennis, Draughts and Chess. We came home with trophies for 1st place in Chess and Archery and we placed 2nd in Girl's Basketball, Swimming and Girl's Table Tennis. We are also very proud to have brought home the trophy for the **Sportsmanship Award**. Well done teams, what a great week!



Music Department



Upcoming items to put in your calendar:

Musicfest - The Musicfest Concert, planned for Wednesday 16 September, will still be going ahead. However, in the event that we may not be able to have an audience, we will be exploring beforehand the idea of streaming the concert on a suitable platform, live or slightly delayed. We may also therefore bring the time forward to earlier in the day (the scheduled start time is currently 7.00 pm) and it will most likely be of shorter length than in past years. I will be in touch via email to all parents of those involved in the concert very soon to confirm exact details. All of our groups will be performing in this event one way or another.

Andrew Ward, Head of Music.

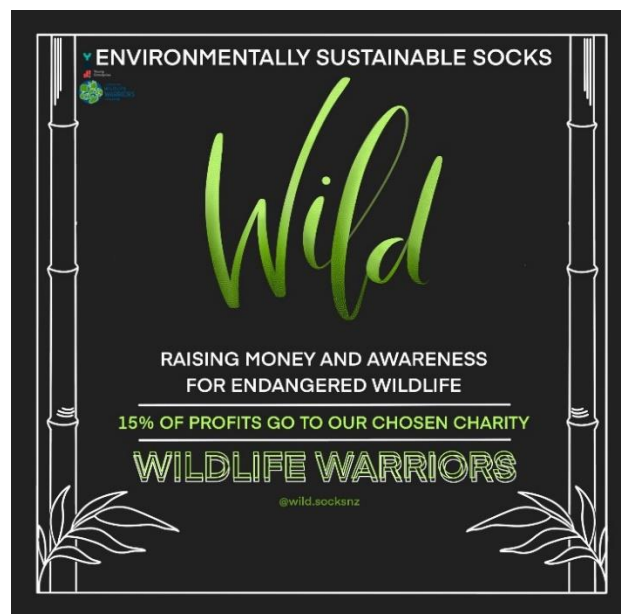
Junior Musicfest – Term 4 Week 4, Tuesday 3 November at 4.30 pm

Enterprising Year 12

Wild is a small company run by **Kyla Murrie**, a Year 12 Whangaparaoa College learner. Wild strives to raise money and awareness for endangered wildlife through bright and sustainable socks.

"Our products are made out of environmentally sustainable bamboo, which poses no threat to our environment and also features a heap of cuddly Koalas. As a small company, we aspire to help charities that are making a huge difference in our world, therefore Wild will be donating 15% of all profits to our chosen charity **Wildlife Warriors, Worldwide.**

If you are interested in purchasing a pair of cuddly koalas socks, go to [@wild.socksnz](https://www.instagram.com/wildsocksnz) on **Instagram** and click the website link in the bio.



The socks are \$20.00 each and donations go to a very important cause."



From the Nurse

LUMINO MOBILE BUS – FREE DENTAL CARE FOR Year 9 – 13 LEARNERS

Due to Covid related disruptions, the mobile dental bus will be at our college in the school holidays. **To make an appointment please call 027 2228521.**

The Auckland Regional Dental Service provides free dental care to **Year 7 and 8 learners**, however also due to COVID disruptions, they have not confirmed any date, or even if they will be able to attend our college this year for these year levels. (See below article).



Tuesday 1 September 2020

To our Auckland whanau,

This letter is to inform you about the service delivery for the Children's Community Dental Service (Auckland Regional Dental Service).

During Level 3, there were national restrictions on the health services able to be offered to minimise the risk of spreading COVID-19. This included restrictions on routine dental treatments and check-ups. Because of this, we have now commenced our COVID-19 Recovery Plan. This means we need to firstly offer appointments to children who have been identified as requiring treatment and those waiting the longest for their routine examination. We also offer an acute service for any child who is experiencing dental pain. In addition, during the transition to Level 2 there may be some restrictions in the range of dental treatments that we are able to provide.

We apologise in advance for the delays this will cause for some children who are due a routine check-up. Please be assured that we will contact you as soon as we are able to offer your child an appointment with our service.

In the meantime, if your child is in pain or you have immediate concerns with their teeth, please phone 0800 TALK TEETH (0800-8255-83384). Our staff will be available to discuss your concerns with you directly, and will offer your child an appointment if required.

For more information as well as our top tips for keeping your child's smile bright, please search 'ARDS' on the Waitematā DHB website – www.waitematadhb.govt.nz.

Kind regards,

Adelle Rongokea, Unit Manager – ARDS

and

Dr Kirsten Miller, Acting Clinical Director – ARDS

Waitematā DHB

Attendance Matters

If a text is sent home regarding your son or daughter being absent for a lesson, please double check the **Parent Portal** and feel welcome to contact that subject teacher to clarify. If your child is away from school for medical or family reasons, please leave a message on the College Attendance web link:

<https://www.wgpcollege.school.nz/CONTACT+US/Absentees.html>

If they are absent for 3 days or more on medical leave, we ask for a copy of a Medical Certificate.

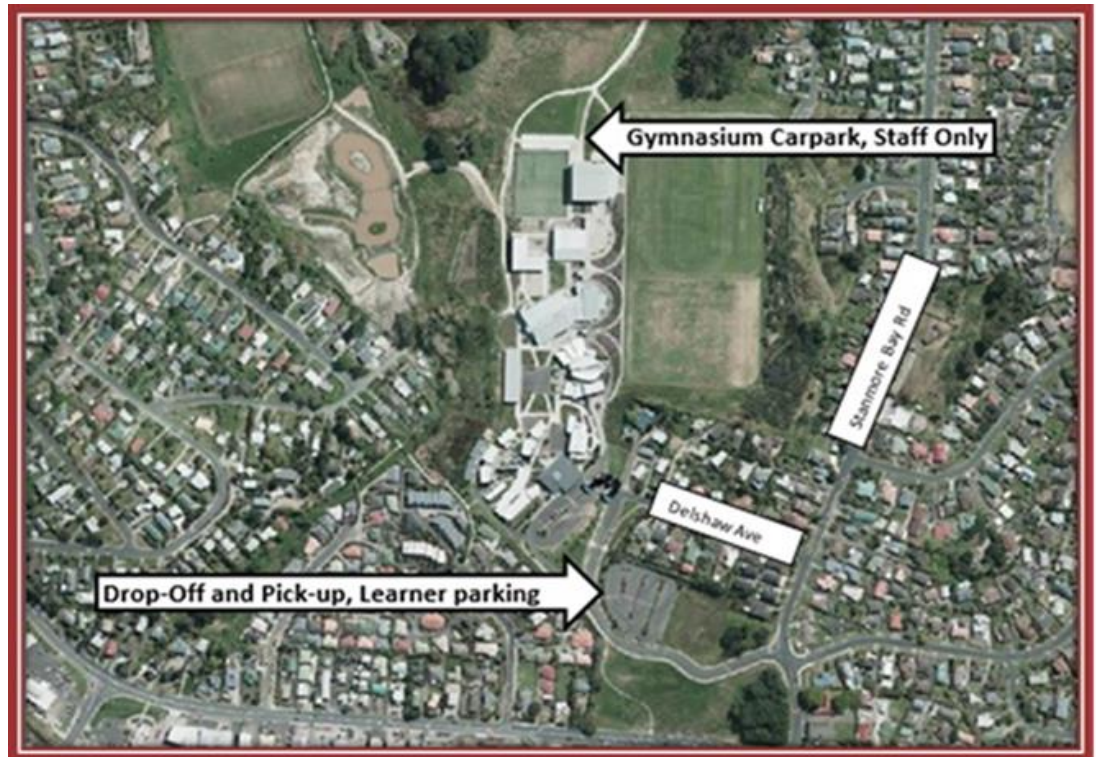
If your son or daughter has cold symptoms, please keep them at home.
Thank you.



Carparks, Drop-off and Pick-up Zones

For the safety of our staff and learners, the gymnasium carpark is designated a staff-only carpark and Disabled drop-off/pick-up zone, Monday to Friday, 8.00 am to 4.00 pm. Only permit holders will be able to use this carpark. Permits are issued by Ginny Catterall, ginnyca@wgpcollege.school.nz

We have a spacious carpark near the front of the school (indicated below) for all drop-off and pick-ups, as well as learner parking. Entry is at 8 Stanmore Bay Road. **Please do not park on or across our neighbours' driveways on Delshaw Ave.** Thank you for your co-operation.



Upcoming Events

September	11	L2OUED Te Henga Walkway Tramp, Muriwai
	16	Musicfest, 7.00 pm
	23	Girls Volleyball Zone Day, Netball Nth Harbour
	24	Boys Volleyball Zone Day, Netball Nth Harbour
	25	Term 3 Ends
	26	L2BIOL01 Metagenomics Day School Ball
October	6-9	Duke of Edinburgh Gold Expedition, Great Barrier
	12	Term 4 Begins
	12-13	Year 7 Howick Village Trips, WLL/LDR-SHH/TOWL
	14	ICAS Mathematics
	15-16	Year 7 Howick Village Trips, LIT/WDF/SMM- JAR/TURK/WRE
	16	ICAS Science
	20	ICAS Digital Technologies
	20-21	Junior Sports Day
	21	Enrolment Evening, 4.00 – 6.30 pm

For more information from our school calendar please see [Quick Links](#)

BYOD Deals

Whangaparaoa College have teamed up with suppliers of BYOD devices and accessories to offer our community access to online deals.

To access the deals at:

Cyclone please click [here](#) and enter the password: **wgpcbyod**

PB Tech please click [here](#)

Noel Leeming please click [here](#) select mynoelleeming on the top bar, setup BYOD membership, choose school.

Community Notices

Do you know any teens looking to sit their Learner or Restricted Licence?

AT are offering free online and face to face support sessions to help them prepare.

Register at the links below:

[Learner Licence](#) or [Restricted Licence](#)

In these sessions we will provide them with:

- Information about the different stages of New Zealand's graduated driver licence
- Advice on how to stay safe when driving
- Resources to help work towards a Learner or Restricted Licence
- Insights into what to expect on the test day
- An opportunity to ask questions, share experiences and obtain advice from experienced trainers.

Defensive Driving Courses for 2020

School holiday/morning courses: Start at 9.30 am, Mondays and Wednesdays.

**28 & 30 September, 5 & 7 October
14, 16, 21 & 23 December**

Evening courses: Start at 6.00 pm, Tuesdays and Thursdays.

**6, 8, 13 & 15 October
3, 5, 10 & 12 November**

All enquiries/bookings can be made direct [see below] or through our website.

Dave Inglis, Director for Adams Driving School Ltd

www.adamsdrivingschool.co.nz

0800 LPLATE [575 283]

021 510 887

09 422 2289

dave@lplate.co.nz

Anyone wanting to make a difference to the biodiversity on the Hibiscus Coast – some Duke of Ed and Envirogroup learners are involved in a project with the local Forest and Bird group building 40 humane backyard rat traps. These are available free to loan provided you register the trap on the TrapNZ website and record any rats killed. The idea is that a group of 3-4 households on the same street get together and receive a trap to use amongst the households. If you would like the opportunity to get one of these traps, are willing to organise a small group of neighbours and log trapped rats, please email **Maria Sinclair** mariasi@wgpcollege.school.nz

Sponsorship and Support

THANK YOU TO OUR WONDERFUL COMMUNITY BUSINESSES AND TRUSTS FOR THEIR SPONSORSHIP AND SUPPORT OF OUR COLLEGE LEARNERS.



Thinking Caps Tutoring

We offer:

- In-School
- After School
- Study Buddy
- Online TUTORING Year 3-12

Enrol NOW: thinkingcaps.co.nz



COAST YOUTH
COMMUNITY TRUST

HOUSE OF TRAVEL

Diane de Jong
Personal Travel Manager
ddi: +64 9 424 4250
mob: +64 21 073 1544
fax: +64 9 427 9707
email: ddejong@hof.co.nz

Orewa
Cnr Hibiscus Coast Highway
and Tamariki Avenue
Orewa 0931
New Zealand

houseofftravel.co.nz

Hibiscus and Bays Local Board
Auckland Council



THE LION FOUNDATION



Bayes Coachlines

 **Armstrong**
Smarter Security

New Zealand's Leading Locksmith and Alarms Specialists

Your local Armstrong Security Technician
Call us for a FREE security check

 **Retire the Rottweiler**

Get the right security for your needs
with our free on-site home security check.

• LOCKS • KEYS • SAFES • ALARMS
CCTV • ACCESS CONTROL

Helping to keep our community safer

0800 506 111
www.armstrong.co.nz

Orewa – 09 426 0126
Warkworth – 09 425 0399

 **NEW WORLD**
Whangaparaoa

your community store
open 7am - 10pm + 7 days a week
570-588 Whangaparaoa Road - 09 869 9013



Fly Buys