



# WHANGAPARAOA COLLEGE

*Together □ Believe □ Achieve □ Ngātahi whakapono tutuki*

## Newsletter

Term 4 Issue 1 2019

### In This Issue

- From the Principal's Desk
- Enrolment 2020
- Mayoral Conservation Awards
- Vector EPro8
- Art Exhibition
- Gateway
- Dance
- Leadership Programme
- Sport
- Yearbook 2019
- Pod
- Coconut Collections
- International Homestays
- Attendance Matters
- Mufti Days 2019
- Upcoming Events
- BYOD Deals
- Community Notices
- Sponsorship and Support

### Quick Links

[Link to Parent Portal](#)

[Link to College Calendar](#)

[Link to NZQA Website](#)

[Link to Careers Page](#)

## From the Principal's Desk

### Finishing Well is Important

I was recently on a flight to Wellington and as usual, the Captain introduced himself with, "Good morning, this is Captain... good conditions... great crew... take off to the South East... sit back and relax... etc". So we take off, I do a Sudoku and we're on our way. At some stage I hear, "Hello again folks, this is the Captain... cruising altitude... the weather in the Capital is.... great to have you on board...etc". By now I've solved my puzzle and I'm drafting a newsletter piece.

About 10 minutes before landing we expect to hear, "Ladies and gentlemen, we will soon start our descent and be landing, we can expect a smooth approach from the South, and we'll have you outside the terminal at about 7.53, where it's fine and 17 degrees. Thank you for choosing to fly with us today. Cabin crew please prepare the cabin for landing."

What we do not want to hear is, "Ladies and gentlemen, we will soon start our descent and try to land this thing, I'll have a go from the South. I'll do my best to get you somewhere near the terminal, but we need to land first. It's just that at pilot school I didn't attend or pass the 'landing section'. I nailed the take-off and cruising sections - so two out of three (67%) is pretty good, eh! Anyway, hang on, I'll give it my best shot."

Finishing well is important! Whether we are landing a plane, working towards the end of the year, or for our Year 13 learners, completing their secondary schooling; we should aim to finish - not fizzle.

Perhaps at a family mealtime you could chat about this: what does finishing well in 2019 look like for you and members of your whanau?

Have a great discussion.  
Ka kite ano

**James Thomas**  
Principal

## Enrolment 2020

### Contact Us

Telephone: 09 424 9177  
Fax: 09 428 4794  
E-mail :  
[enquiries@wgpcollege.school.nz](mailto:enquiries@wgpcollege.school.nz)

### Street Address:

8 Stanmore Bay Road  
Whangaparaoa  
Auckland  
New Zealand

### Postal Address:

PO Box 775  
Whangaparaoa  
Auckland 0943  
New Zealand

## OPEN DAY TOUR

Thursday 31 October at 11.30 am

## ENROLMENT NIGHT

Tuesday 12 November 4.00 - 6.30 pm

## CONTACT

Tracey O'Neill

Enrolment Administrator

Tel: 09 424 9177 extension: 209

Email: [enrol@wgpcollege.school.nz](mailto:enrol@wgpcollege.school.nz)

<http://www.wgpcollege.school.nz>

## Mayoral Conservation Awards

One of our Year 7 teachers; Karen Turner attended the Mayoral Conservation Awards on Thursday 19 September, as our College was a finalist in the schools section. Six years ago, the Year 7/8's began a project to develop the wetlands next to Whangaparaoa College, where we cleaned up and planted it with help from the Council. It culminated in a Wetlands Festival with art activities related to conservation, with 3 artists working with all the classes – Anna Evans, Tiffany Singh and The Roots.

As Mayor Phil Goff said – "The Arts and Conservation – what a great mix!" This is how we got our wonderful mural on the end of the J Block wall, if you haven't seen it already, do come in and check it out! Although we didn't win the award, just getting to the finals was an achievement, as there are many schools doing their part in Conservation of the Environment, which is just fantastic. We are planning on reenergising the wetlands area again early next year, with more children and projects involved.



## Vector EPro8



Congratulations to **Paige Sweetman, Zach Juntilla, Caleb Harris and Jess Quayle** (Team 1) who won 2nd place in the Vector EPro8 Challenge recently. They have qualified to be in the finals series in Auckland.

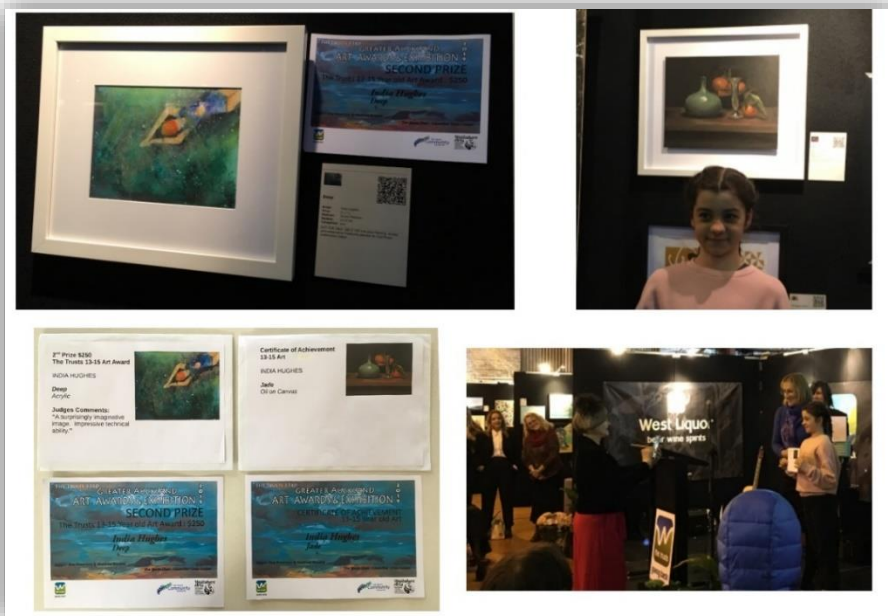
**Makayla William, Oliver Marchant, Justin Zhang and Raees Ahmed** (Team 2) made a wonderful attempt, almost making it to the top places.

If you see these learners, please give them a pat on the back and congratulate them for work well done. They had fun!

For more pics, click [here](#)

## Art Exhibition

**India Hughes** entered 2 pieces of art into the 'Corban's Estate Greater Auckland Art Exhibition' and on Thursday 26 September was awarded not 1 but 2 awards. An Achievement Award for her still life painting "JADE", and 2nd Place \$250.00 Award for her swimmer watercolour "DEEP". Well done India.



## Gateway

**Alessandra Harknett** completed her Gateway work experience at *The Palace Dance Studio*, and she has since been lucky enough to be invited to other events. This is Alessandra with the founder of The Palace Dance Studio, Parris Goebel, who is an internationally renowned choreographer.





## Dance



**Brittany Coleman** from *Dancing with the Stars* has been taking some workshops with the Year 12/13 Dance classes recently.

## Leadership Programme

### Whangaparaoa College Leadership Programme for Year 12

The 2019 Whangaparaoa College Leadership Programme was an informative 3-session event catered towards preparing Year 12's with skills which will help them in the future. It was fun and encouraged comradery within the group. The Leadership Program gave us time to reflect on ourselves and our peers, and taught us ways we can carry out acts of leadership in our community. It also gave us a chance to get to know the Senior Learning Team and Youth Workers to a better extent. All round, the 2019 Whangaparaoa College Leadership Programme was an amazing event, which encouraged the development of great leaders for next year and for years to come. **Rebekah Goodchild**

Someone once told me to "Grasp every opportunity while you can". So far, Whangaparaoa College has given me the opportunity to jump off the Auckland Harbour Bridge, meet exciting new people and to leave my comfort zone by participating in team building activities, including leadership moments. As well as these, I had the chance to experience the Leadership Program. By working in teams, I was pushed to my limits mentally, physically and emotionally. We did everything ranging from Lego building to blindfolded non-talking chocolate finding, and toxic river crossings. Within these tasks, I bonded more with my group and was able to make stronger friendships. I also learnt what Myer Briggs "personality type" I am, which helped me to know more about myself. The guest speakers and prefects inspired me to set and reach more of my goals in life. I am glad I took this chance to lead and hope to follow in fellow peers and students footsteps. **Brooke Warrington**

For more pics from the programme – click [here](#)



## Sport

### Sporting Excellence 2019

We held our Sporting Excellence Awards at the end of Term 3.

A big thank you to our guest speaker Brittany Coleman, and congratulations to all those who won awards.

Netball Year 7/8 Player of the Year	Noelani Roberts
Netball Year 9/10 Player of the Year	Georgia Taylor
Netball Year 11-13 Player of the Year	Whitney Blakiston
Netball Services to Umpiring	Kian Manilal
Sokolich-Beatson Services to Netball	Di and Bob Conn
Zone Day Team of the Year	Boys U55kg League Team
Year 7/8 Team of the Year	7/1 Netball
Sportsboy of the Year	Jonny Milne
Sportsgirl of the Year	Noelani Roberts
Junior Sportsperson of the Year	Rosie Risbrook
Senior Sportsman of the Year	Seamus Kelly
Senior Sportswoman of the Year	Samantha Bright
Services to Umpiring	Ariana Hunt
Student Coach of the Year	Amy Horton and Jemma Davies
Sportsmanship	Notana Snowden
Contribution to Sport	Matt Mitchell
Coach of the Year	Scott Travis
Team of the Year	1st XV Rugby
Overall Sporting Excellence	Samantha Bright

### Summer Sports

Summer sports have started with a bang this term. We have teams travelling to Harbour for Girls and Boys Volleyball and Girls Touch, with a couple of Year 7/8 teams playing in the local Sharks Touch Competition each week.

### Year 7/8 Athletics

Athletics will take place on Wednesday 30 October. This is a sign-up event. Sign up's for events are in the Sports office, cut-off is Friday 25 October.

### Blue-Light Games

Fast Five Netball, Mixed Touch and Futsal will be heading away to the Blue Light games in Tauranga at the end of November. This a fun-filled U15 Tournament competing against other schools.

## Yearbook 2019



Our 2019 issue is available via pre-orders only. \$20.00 at Learner Accounts to be paid by Wednesday 30 October. Don't miss out!

## Pod

This is the **Project-based Pod** website link and includes information about the Pod and examples of learner projects.

<https://sites.google.com/wgpcollege.school.nz/wgpproject-basedpod/home>

## Coconut Collections

Coconut Collections is a business created by two Year 13 learners, Skye and Aalyana, where they have created a product featuring Maori myths and legends. This is a product entirely unique to their market which offers four Maori myths and legends, illustrations, activities and a glossary for each story which provides pronunciation and explanations for each Maori keyword. This is a product that has been created for anyone to use that is interested in learning some of the Maori legends, though can be used by learners in Years 4-7. This fun and effective learning resource is only \$28.00, which comes with other product accessories in the pack. Coconut Collections has also been chosen to attend the Regional Young Enterprise Scheme Awards this year and is hoping to make it to the National Awards in Wellington. The Maori Collection is available at [coconut-collections.mystorbie.com](http://coconut-collections.mystorbie.com)



## International Homestays

### Hosting an International Learner.

Here at Whangaparaoa College we have an International Department that offers an awesome programme to learners from all over the world. Part of their experience in New Zealand includes staying with local families.

We have a wonderful crew of homestay families who welcome our learners into their homes and include them as one of their own.

It is a real privilege to share our coast and be able to care for these learners. They travel from countries often very different to New Zealand, leave their own families and land with great excitement, apprehension and enthusiasm, to immerse themselves in kiwi life.

If you would like to join the homestay crew, you are welcome to call me - **Sue McKay, Homestay Manager 09 424 9177 extension 238**, or visit the link below, where you will find the necessary paperwork to be completed.

As a homestay family, you are paid a homestay fee to assist with accommodating your learners. In 2020 this will increase to \$280.00 per week per learner. I am more than happy to have a chat and answer any questions you may have. I can visit you at home, you can pop into college or just give me a call. **Sue.**

<https://www.wgpcollege.school.nz/International/Homestay.html>

## Attendance Matters

Attendance is an important issue that affects the whole community – your school, learners, parents and whānau, iwi and the wider community. Learner attendance has clear influence on their engagement and achievement. All learners must be present at school, so they can participate and engage in learning.

If learners arrive at school after 8.40 am, please sign in at the main office. If they are going to be away from school sick three or more days, please provide the ACG Kaiarahi or Tutor a copy of a Medical Certificate. Thank you.





## Mufti Days 2019

In Term 1, learners donned their gumboots and best Kiwiana gear in support of the *I Am Hope* community support group. *I Am Hope* and Gumboot Friday were started by Mike King, in order to raise money to provide kiwi kids with free counselling and to encourage communities to join the conversation on mental health.

In Term 2, learners took a stand against bullying and celebrated their diversity by joining in *Pink Shirt Day*. *Pink Shirt Day* is a global event led by the Mental Health Foundation, who are dedicated to working towards a bully-free NZ and creating a safe, accepting environment for every kiwi.

In chilly Term 3, learners wrapped up for *Warmth Day* in their fluffiest socks and cosiest sweaters. *Warmth Day* was dedicated to the Whangaparaoa Lunch Club, a student-led group who deliver lunches to Whangaparaoa Primary and who are hoping to include more coast schools next year.

Term 4 learners will be celebrating their festive cheer with a *Christmassy* themed mufti day on Tuesday 29 October. Learners will have the option to bring in small gifts or holiday decorations for Christmas gift boxes, that will be delivered to coast families facing financial hardship.



## Upcoming Events

<b>October</b>	24-25	Year 7 Financial Literacy Programme
	25	Year 12/13 Drama Trip, Q Theatre
	<b>28</b>	<b>Labour Day Holiday</b>
		Armageddon, ASB Showgrounds
	29	Touch Zone Day
		Mufti Day - <i>Christmassy</i>
	30	Year 7/8 Athletics Sign-up
		Full School Assembly
	31	Open Day Tour 11.30 am
		Year 7 Auckland Maritime Museum, 7TOWL/7TURK
<b>November</b>	1	Year 7 Auckland Maritime Museum, 7WLL/7WRE
		Last Day for Seniors Eligible for Study Leave
	4	Year 8 HPV 2
		End of Year Activities Begin for International Learners
	5	National YRE Winners Workshop, UoA City Campus
	6	Kick Start, Programmes 1&2
		Boys Badminton Zone Day
	7	NZQA Exams begin
		Bronze Duke of Edinburgh Training Day
		Year 7 Auckland Maritime Museum, 7JAR/7LIT
		Girls Badminton Zone Day

For more information from our school calendar please see [Quick Links](#)

## BYOD Deals

Whangaparaoa College have teamed up with suppliers of BYOD devices and accessories to offer our community access to online deals.

To access the deals at:

**Cyclone** please click [here](#) and enter the password: **wgpcbyod**

**PB Tech** please click [here](#)


**noel leeming**  
**friends & family deals**  
 Whangaparaoa College • 30 Oct - 5 Nov 2019  
**cost\* + 10% storewide**  
excludes\* IT accessories, PC Software, AV Accessories & PC Consumables See below for terms & conditions.  
**+2.5% of total sales will go towards school development**  
**Get great deals on the brands you love including:**  
 FISHER & PAYKEL |  acer |  simpson | SAMSUNG |   
 logitech | Lenovo | oppo | FUJITSU | REMINGTON |  SONY | LG  
 Canon | Microsoft | Russell Hobbs | Breville |  HUAWEI | Panasonic | Haier.



**Got a bit of a tech problem?**  
We've got a solution.

From getting it home, to figuring out what it all does - we'll help you get the most out of your technology.

Correct Leeming tech solutions

Want to know more? Get in touch 0800 555 989 or visit us in store.



**Get it now. PartPay later.**

Pay over 6 weeks. No interest. No fees.

\*Suits apply. Ask in store for more details.

**Print and present this flyer or show it on your device in store. Pricing available in store only.**

Offer runs 30 Oct - 5 Nov 2019 and is only available at Noel Leeming stores listed below, while stocks last. Cost\* +10% storewide includes IT accessories, PC software, AV accessories, & PC consumables. \*Average cost reflects the average price of the product including any administration and handling costs, and does include any volume related adjustments which may apply and GST. Offer is not available online and cannot be used in conjunction with any other offer or interest free credit offer other than PartPay which is available for purchases. Offer cannot be used with any other promotional offer. Offer does not apply to any Noel Leeming gift card purchases. Tech Solutions extended warranties to buy, delivery fees, Dyson products, Apple hardware including iPhones, gaming consoles and bundles, iTunes cards, mobile phone top up cards, bonus, free or half price items. PV Buy points consist of a standard point for every \$50 of cumulative spend at Noel Leeming over a 12 month period. Not redeeming 20% off for more details. An additional 2% surcharge applies when purchasing items on a credit card. See store for details. Some of our nationally advertised specials may be at a lower price than this offer but you will receive the best price on the day for the items you choose.


**noel leeming**  
 in store offer available at Noel Leeming Silverdale


 visit us in store  

 call 0800 44 44 88





## Community Notices



# Supporting success in your school.

If you're a parent, staff member or member of the school community and you take out a new ASB home loan of \$250,000 or more, ASB will donate \$500 to your chosen participating school.

# \$500

ASB's lending criteria and terms apply. Fees may apply.  
Eligibility criteria - Documentation of the facility agreement must be done by 30 June 2020.  
For this promotion to apply, you must make mention of it during the home loan application.  
Only applies to loans which are secured by residential owner-occupied property with a minimum of 20% equity. The offer is limited to one donation per new home loan. The donation will be made to the chosen school on complete draw-down of the home loan. Excludes lending through brokers. Full eligibility criteria, exclusions, terms and conditions are available at [asb.co.nz/promotions/supporting-success-in-your-school.html](http://asb.co.nz/promotions/supporting-success-in-your-school.html)



ASB Bank Limited 56290 124788 0719

**Contact your local Whangaparaoa ASB Branch on 09 421 9810 for further information on great home loan rates, and how you can help support Whangaparaoa College with a \$500 donation.**



## WHANGAPARAOA COLLEGE

# Coast Physio and Hand Clinic

( in Admin block )

Convenient on site treatment for:

- Sports Injuries
- Neck and Low back pain
- Adolescent Growth Injuries/Pain
- Hand/wrist injuries

No referral required

Hand Clinic: Tuesdays and Fridays from 9:00am to 11:00am  
Physio Clinic: 11:30am-2:30pm Monday, Wednesday, and Friday

For an appointment please phone 09 424 1309, or text 021 187 3299

Tom



Angela





## Sponsorship and Support

THANK YOU TO OUR WONDERFUL COMMUNITY BUSINESSES AND TRUSTS FOR THEIR SPONSORSHIP AND SUPPORT OF OUR COLLEGE LEARNERS.



*Bayes Coachlines*



your community store  
open 7am - 10pm • 7 days a week  
570-588 Whangaparaoa Road - 09 869 9013

