

WHANGAPARĀOA COLLEGE - UNIFORM OVERVIEW

BLOUSE - \$55



SHIRT - \$55



JERSEY - \$110



JACKET - \$110



CAP - \$20



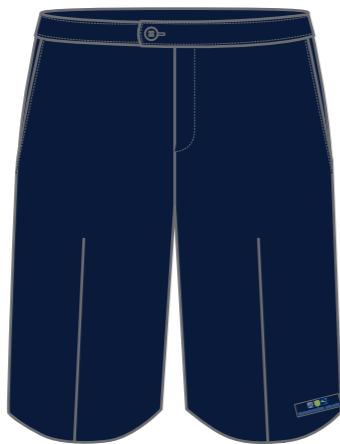
SCARF - \$45



SKIRT - \$75



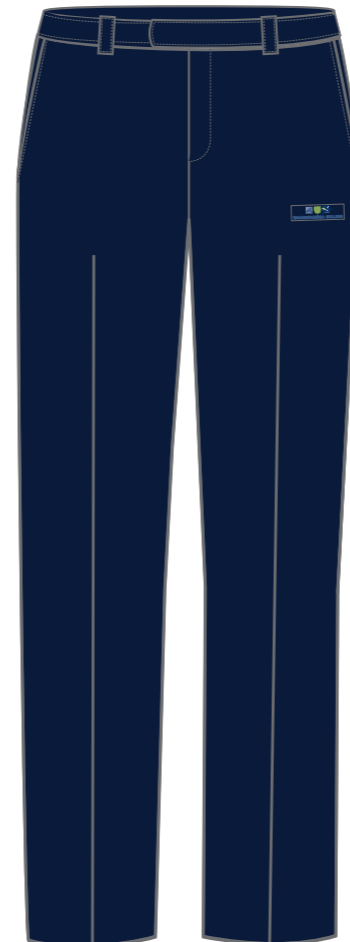
SHORT - \$55



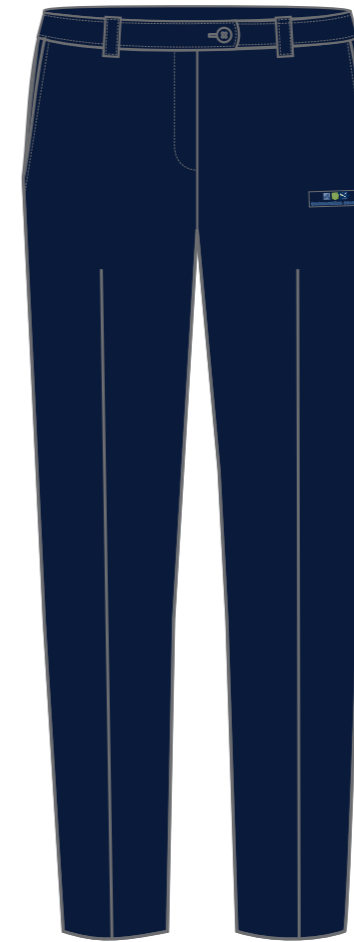
FITTED SHORT - \$55



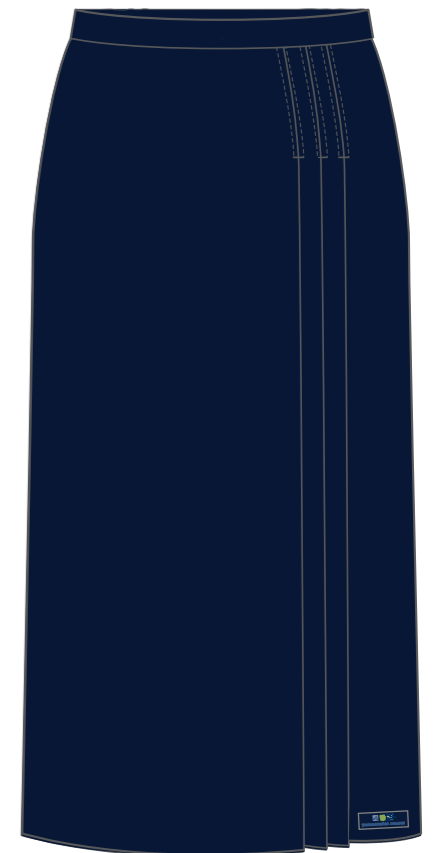
TROUSER - \$75



FITTED TROUSER - \$75



LONG SKIRT - \$85



BLAZER - \$180



FITTED BLAZER - \$180



TIE - \$30

